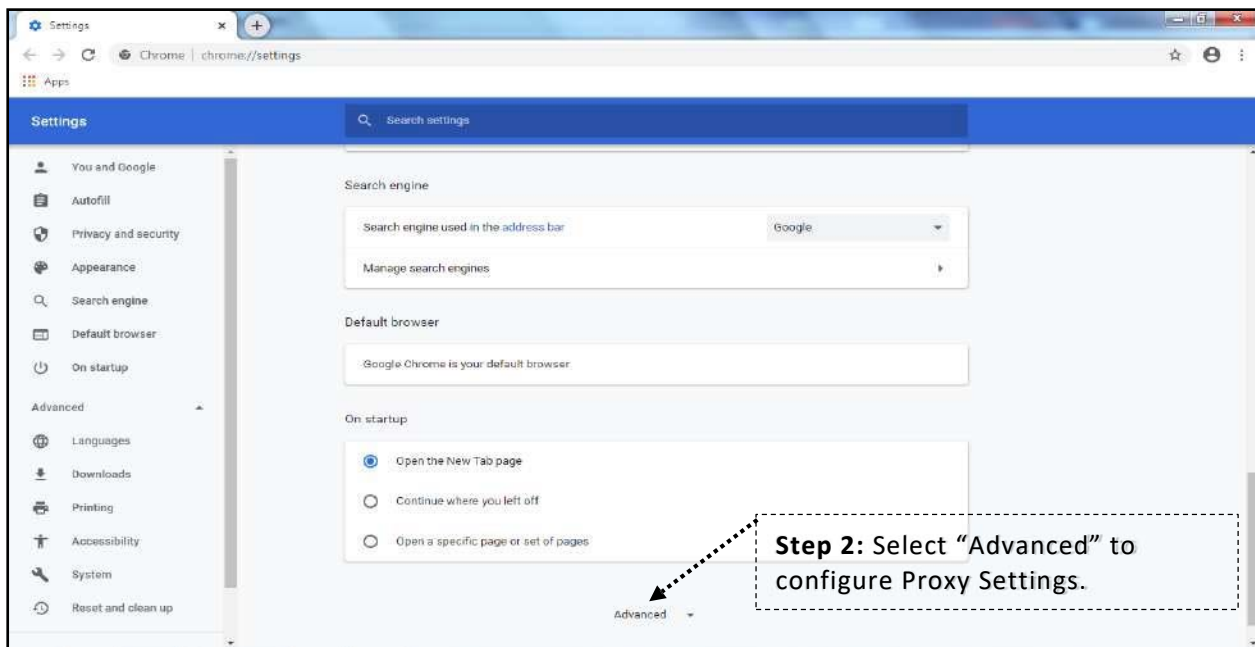
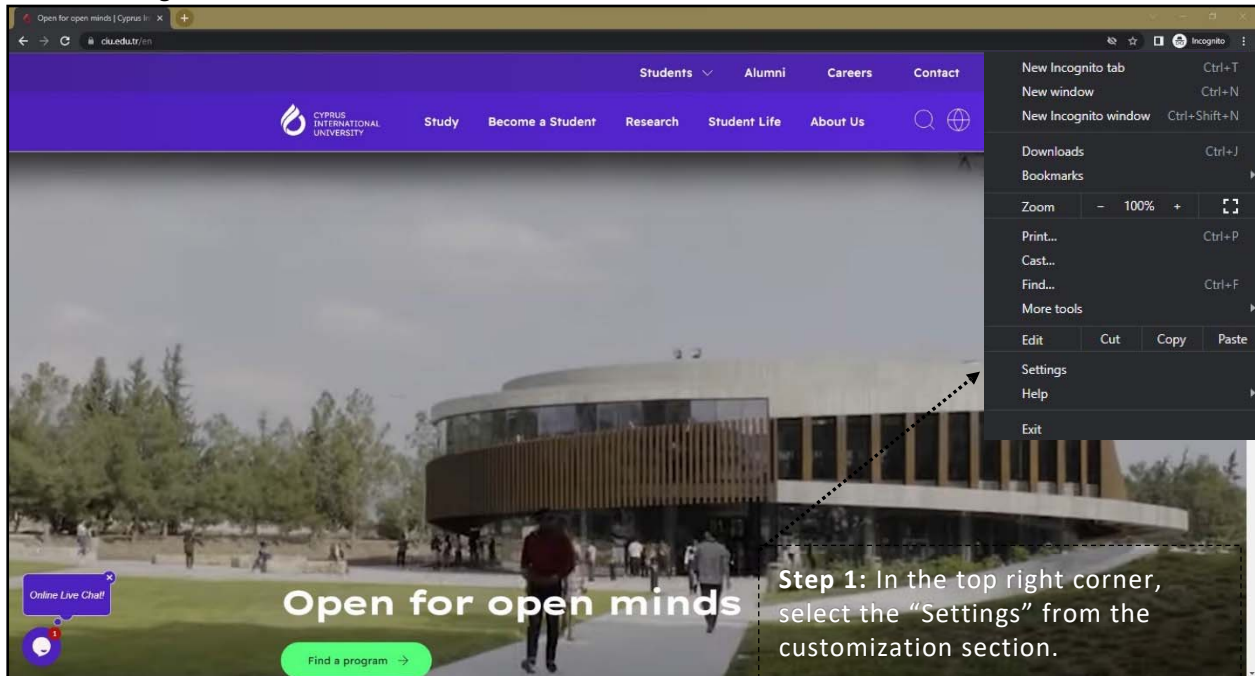


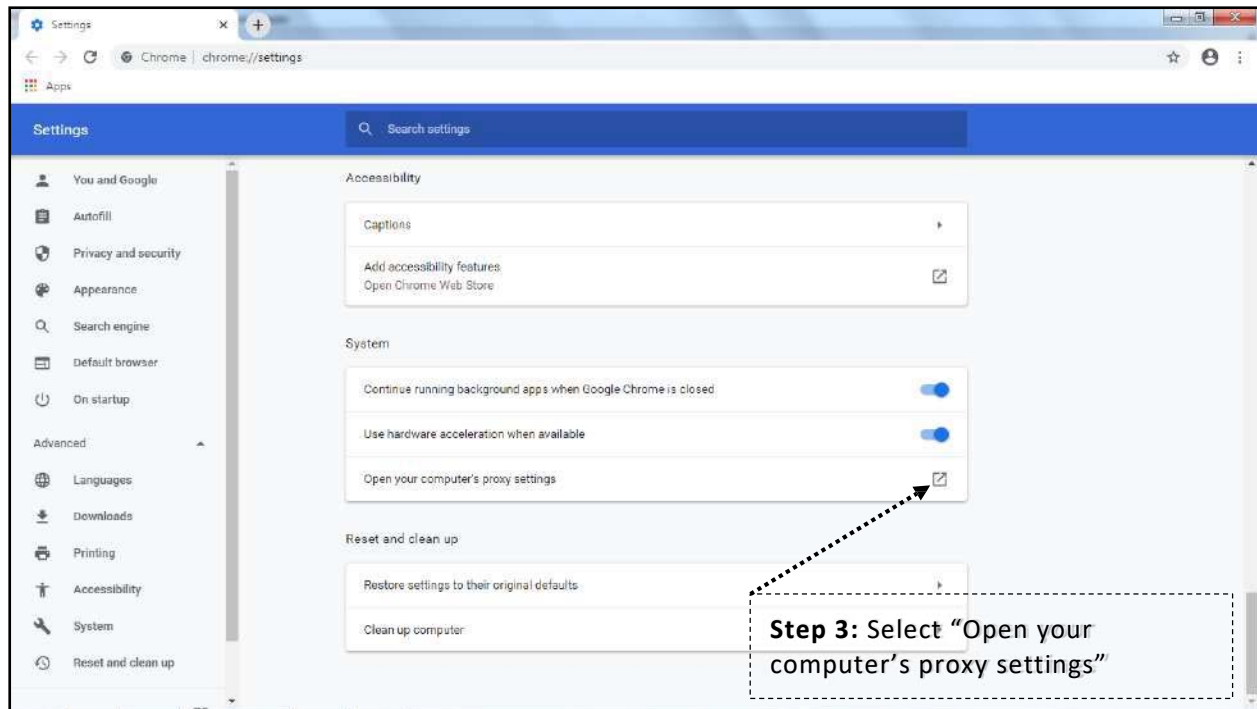


CYPRUS INTERNATIONAL UNIVERSITY

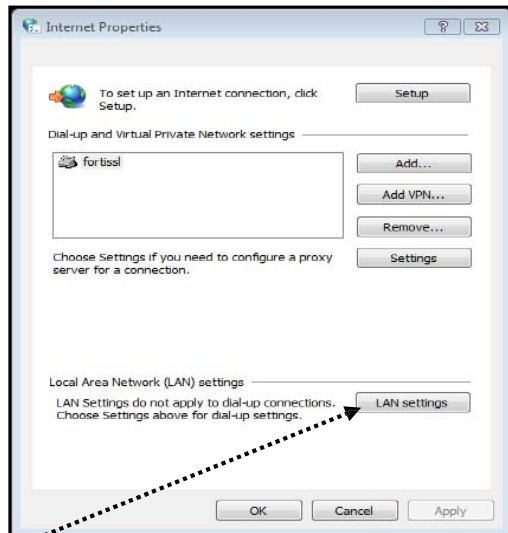
ONLINE LIBRARY ACCESS FROM OFF CAMPUS WITH PROXY USER MANUAL FOR STUDENTS

CIU online library and contents can be accessed by configuring web browser to use the CIU proxy configuration (http://www.ciu.edu.tr/ciu_proxy_std.pac). Below are the screenshots showing how this can be done via Google Chrome.

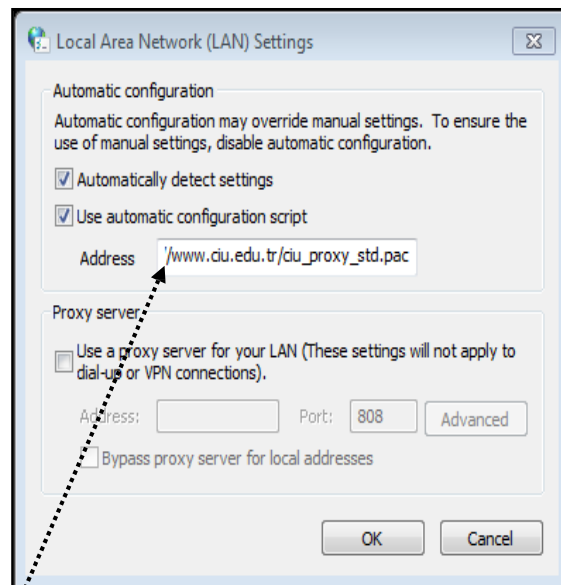




For Windows 7

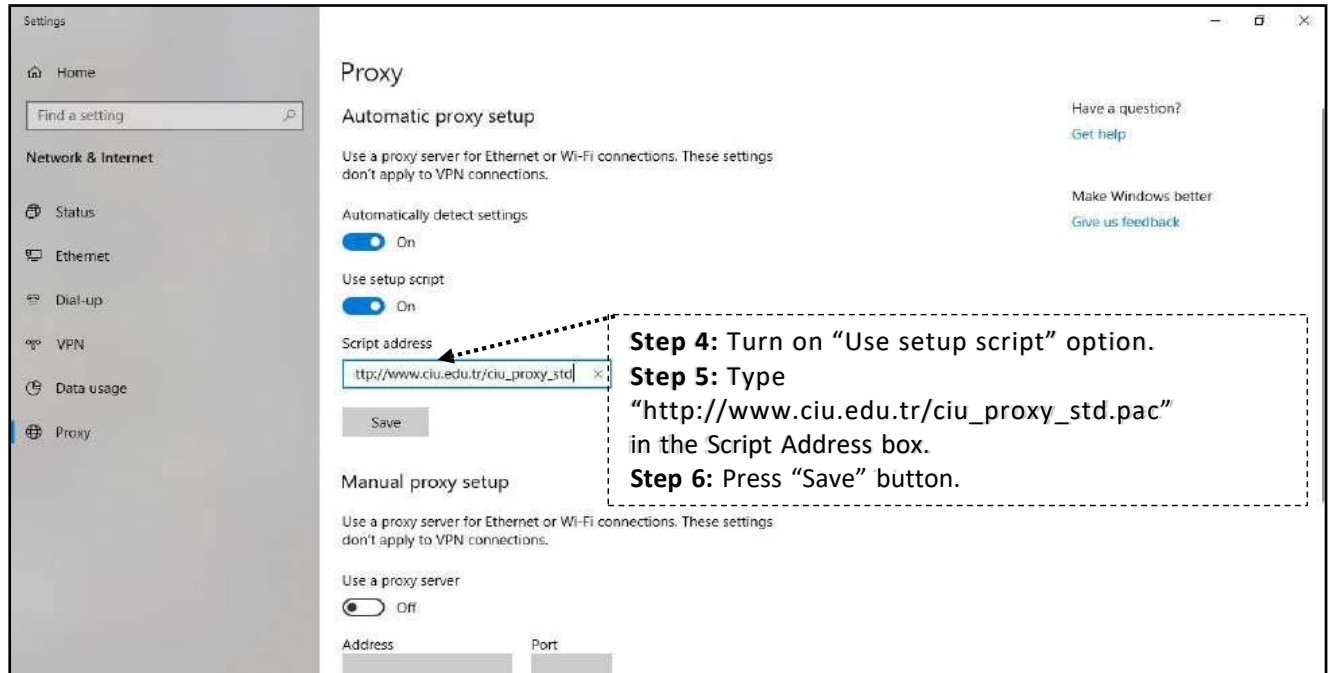


Step 4: Select "LAN Settings"

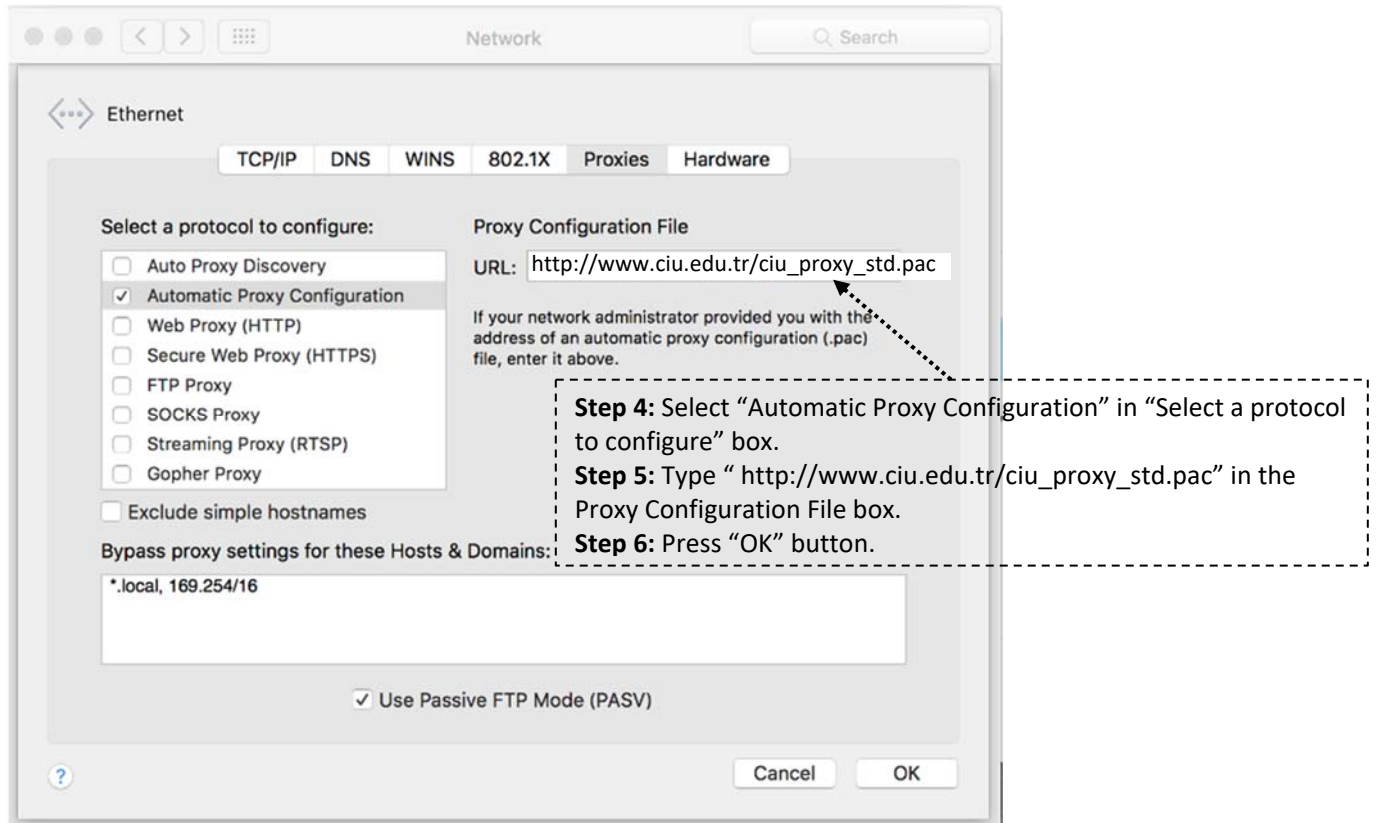


Step 5: Select "Use automatic configuration script" option.
Step 6: Type "http://www.ciu.edu.tr/ciu_proxy_std.pac" on in the Address field.
Step 7: Select "OK".

For Windows 10



For Mac OS



After configuring the web browser, to access the page listing all available libraries;

1. Enter www.ciu.edu.tr web address.
2. Select "Databases" from the "Student Life" tab.
3. Use any electronic database available on the menu.

Note that, during the first access, you will be asked to provide your **CIU-NET student account credentials**.

What is a CIU-NET account?

This is an account all students are being provided, so that they can benefit from all systems, automation and portals provided by Computer Center. It consists of a password and username.

How to change the password of the CIU-NET account?

1. Go to <https://sis.ciu.edu.tr> using an up-to-date web browser.
2. Click on 'Forgot my password!' link
3. Fill the form with your details and click 'Continue'

If your details are correct, you will be able to reset your password. If an error occurs, please follow the instructions on the page.

Terminology

Username: Your student number

Password: Password set in the form on the screen